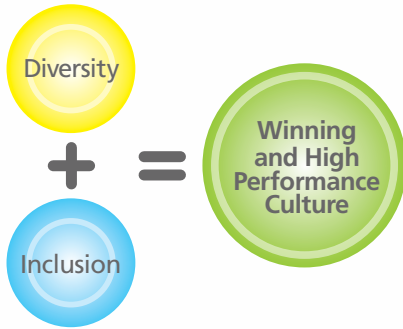


TO THE
WORLD'S BEST TEAM.

**WELCOME TO DIVERSITY
AND INCLUSION WITH
COCA-COLA ENTERPRISES.**

OUR FORMULA FOR SUCCESS



Coca-Cola Enterprises

Diversity Is Business.

<http://crs.cokecce.com/diverse-and-inclusive-culture>

Coca-Cola Enterprises Inc. is an equal opportunity/drug-free employer requiring background checks. Join us in celebrating our diversity. "Coca-Cola" is a trademark of The Coca-Cola Company.

**BRING
YOUR
WORLD.**



Here's to recognizing, protecting
and embracing the world we serve.
To learn more about diversity and
inclusion at Coca-Cola Enterprises,
visit: [http://crs.cokecce.com/
diverse-and-inclusive-culture.](http://crs.cokecce.com/diverse-and-inclusive-culture)



Here's to celebrating what makes each of us unique and wonderful!

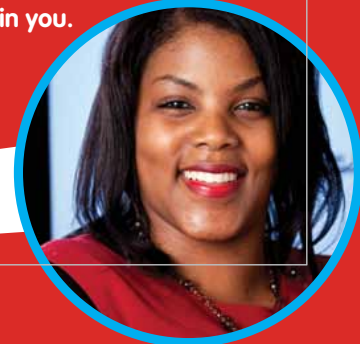
Coca-Cola Enterprises believes in the value of you.

Our commitment to diversity and inclusion means we'll do our best to make sure you'll feel at home, be valued for your thoughts and actions, discover truly equal opportunities and stay inspired to bring your best to the job every day.

We actively work to promote an environment where everyone is a respected and valued member of our team. As the world's leading beverage marketing and bottling organization, our true secret formula is maintaining an environment that ensures each one of us has the freedom to contribute ideas and efforts. And, as a result, we're home to one of history's most amazing high performance teams and remain committed to having a workforce that is representative of the communities we serve.

Diversity and inclusion is woven into every aspect of our business – the way we interact with each other, our suppliers and our planet through Corporate Responsibility and Sustainability initiatives.

Coca-Cola Enterprises leverages the richness of our differences, and values and celebrates a workforce which represents different ages, races, cultures, genders and sexual orientations. Because everyone deserves the right to achieve their best every day.



Explore new possibilities for achievement through our Employee Business Networks.

Coca-Cola Enterprises has established several Employee Business Networks to ensure an inclusive environment and support recruitment, retention of diverse employees, education, community outreach and mentoring.

Working in partnership with our Diversity Councils, our Employee Networks are actively engaged partners providing:

PURPOSE

- We actively work to provide an environment where everyone is a respected and valued member of our team
- Supporting CCE's commitment to Corporate Responsibility and Sustainability

COMMUNITY PARTNERSHIP

- We support community-sponsored initiatives
- We leverage contacts to participate in community outreach efforts
- We identify opportunities for volunteerism

WORKPLACE CULTURE

- We promote cultural awareness through educational information and events
- We expose people to new information through cross-functional networks

LEARNING & DEVELOPMENT

- We provide career advancement tools and resources
- We act as resources for personal and professional development
- We assist in the orientation of new hires

From supporting an open-door policy with management on concerns to helping facilitate a focus on minority succession planning, coaching and mentoring, Coca-Cola Enterprises is proud to foster a constructive, transparent and two-way dialogue with our employees.

**We hear you.
We support you.
We believe in you.**

